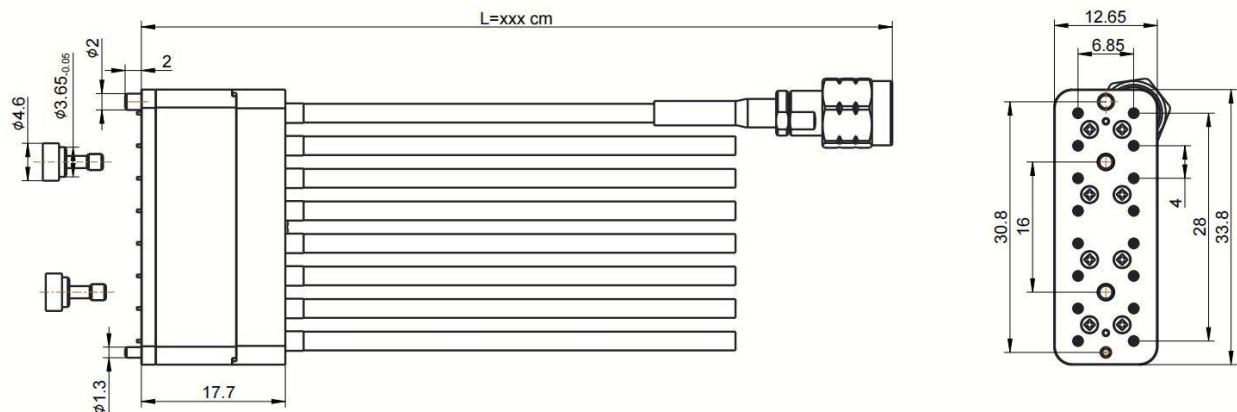


Multi-coaxial Cable Assembly Datasheet



RCM7-SD16-xxxS-6YEB



Configuration

Connector 1 Type	SLC70 male, acc.to Dloorplf internal interface
Connector 2 Type	1.85mm Male
Connector Body1	Aluminum Alloy/Anodizing
Connector Body2	Stainless steel (SUS303), Passivation
Cable Type	Low Loss Stable Phase
Cable Diameter	2.3mm

Electrical Characteristics

Impedance	50Ω
Frequency Range	DC to 67GHz
Return Loss	TBD
Insertion Loss	≤0.07dB/cm x Length (cm)+1.6dB, DC to 67GHz
Different cable phase match	±8 Degree Max

Mechanical Properties

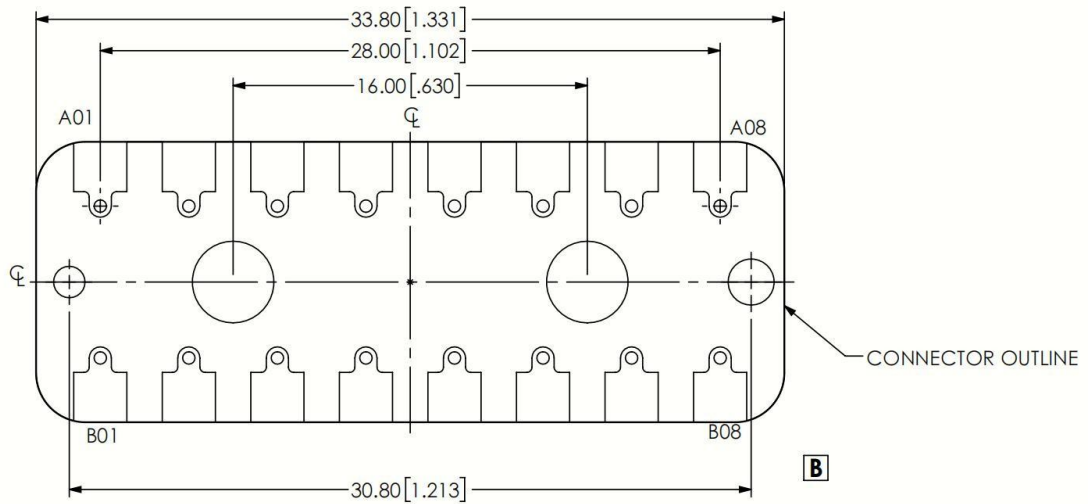
Mechanical Life	1.85 Male 500 cycles, SLC70 Male 100 cycles
-----------------	---

Environment Data

Working Temperature	-40℃ to +125℃
---------------------	---------------

Multi-coaxial Cable Assembly Datasheet

PCB Layout Dimensions



Notice:

The given layout is not optimized to fit all of the possible board configurations regarding RF-performance, it represents a recommendation for optimum solderability of the connector. In order to guarantee optimum high frequency properties of the connector, an RF-analysis of the connector to board translation is recommended.

Order Information

P/N	Description
RCM7-SD16-030S-6YEB	Multi-coaxial Cable Assembly, SLC70(M) breakout to 1.85(M),2x8, DC to 67GHz, length 30cm
RCM7-SD16-050S-6YEB	Multi-coaxial Cable Assembly, SLC70(M) breakout to 1.85(M),2x8, DC to 67GHz, length 50cm
RCM7-SD16-xxxS-6YEB	Multi-coaxial Cable Assembly, SLC70(M) breakout to 1.85(M),2x8, DC to 67GHz, length xxx cm

Product 3D View

