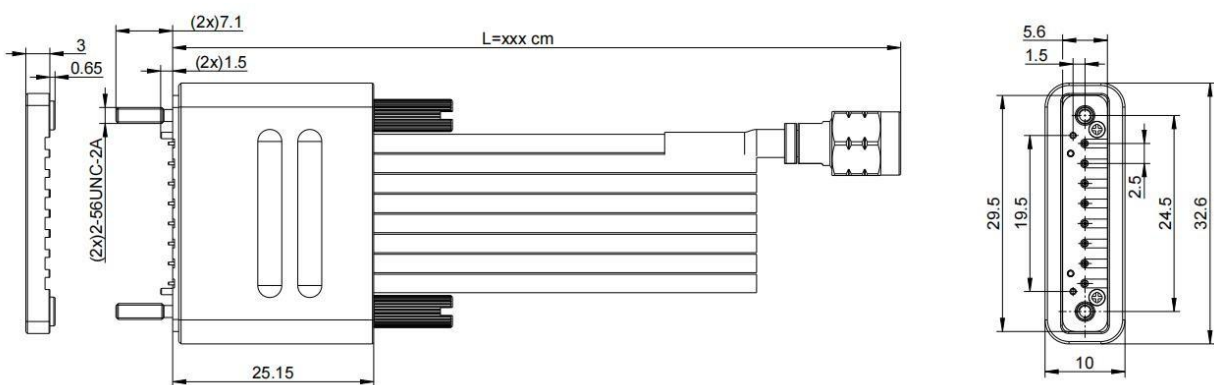


Multi-coaxial Cable Assembly Datasheet



RCM7-SD08-xxxS-6YEK-CK



Configuration

Connector 1 Type	SLC70 Male,acc.to Dloorplf internal interface
Connector 2 Type	1.85mm Male
Connector Body	Aluminum Alloy/Anodizing
Cable Type	Low Loss Stable Phase
Cable Diameter	2.3mm

Electrical Characteristics

Impedance	50Ω
Frequency Range	DC to 67GHz
Return Loss	TBD
Insertion Loss	≤0.07dB/cm x Length (cm)+1.6dB, DC to 67GHz
Different cable phase mating	±8Degree Max

Mechanical Properties

Mechanical Life	100 Cycles
-----------------	------------

Environment Data

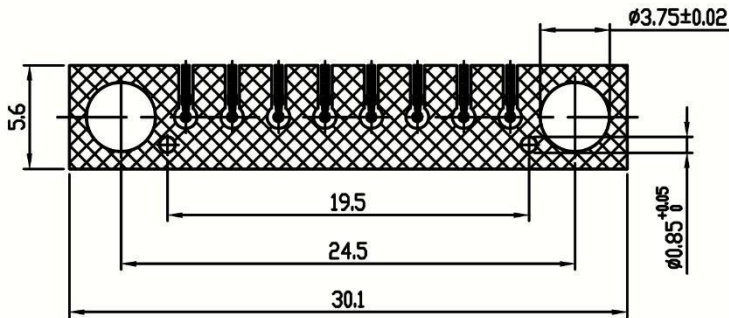
Working Temperature	-40℃ to +125℃
---------------------	---------------

Draft	Data	Approved	Data	Rev	Name	Date
Ray.Wang	2024.06.03	Steven.SONG	2024.06.03			

Multi-coaxial Cable Assembly Datasheet



PCB Layout Dimensions



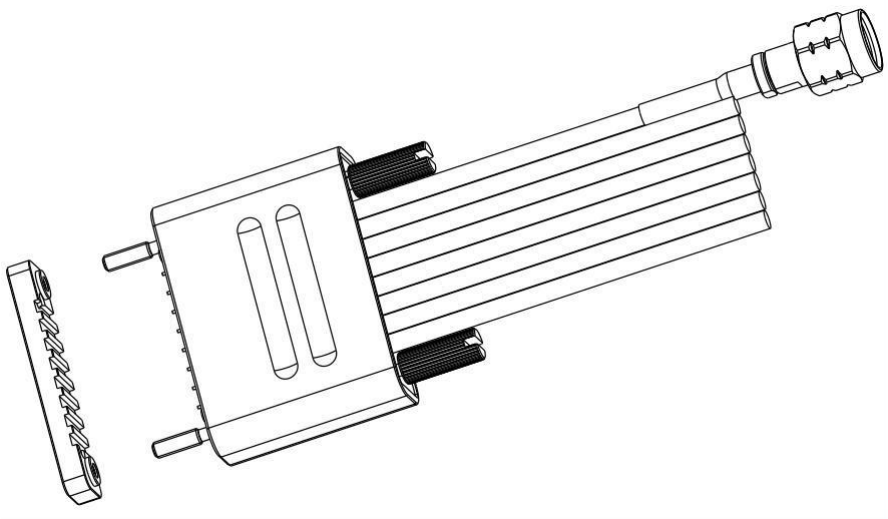
Notice:

The given layout is not optimized to fit all of the possible board configurations regarding RF-performance, it represents a recommendation for optimum solderability of the connector. In order to guarantee optimum high frequency properties of the connector, an RF-analysis of the connector to board translation is recommended.

Order Information

P/N	Description
RCM7-SD08-030S-6YEK-CK	Multi-coaxial Cable Assembly, SLC70(M) breakout to 1.85 Male,1x8,DC to 67GHz, length 30cm
RCM7-SD08-050S-6YEK-CK	Multi-coaxial Cable Assembly, SLC70(M) breakout to 1.85 Male,1x8,DC to 67GHz, length 50cm
RCM7-SD08-xxxS-6YEK-CK	Multi-coaxial Cable Assembly, SLC70(M) breakout to 1.85 Male,1x8,DC to 67GHz, length xxx cm

Product 3D View



Draft	Data	Approved	Data	Rev	Name	Date
Ray.Wang	2024.06.03	Steven.SONG	2024.06.03			