

QSFP-DD Module Compliance Board

QSFPDD-MCB-8-GC

Key Features

- Supports 8x50Gbps interface
- 40GHz 1x8 Multi-coaxial Connectors
- Connector Durability:250cycles minimum
- Switch control (MODSEIL,ResetL,LPMODE)
- DDMI Connection(I2C)
- USB interface
- All 8 channels come with matching trace length
- Pin for QSFP-DD MSA
- Support QSFP-DD Cage
- Module power consumption Support Class 8
- Operation Temp: -40℃ ~ +85℃

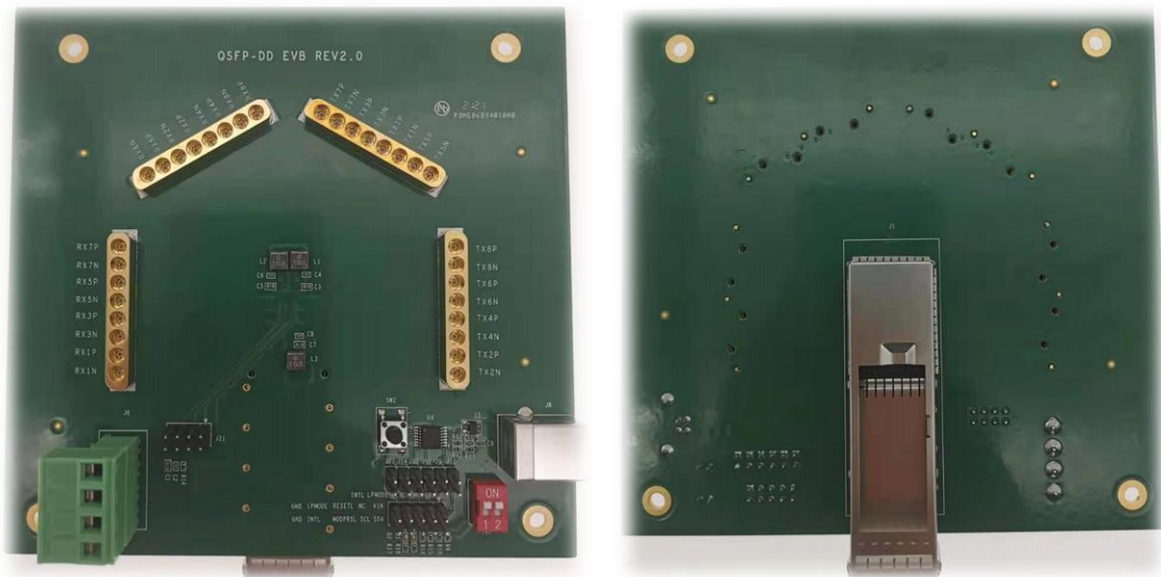
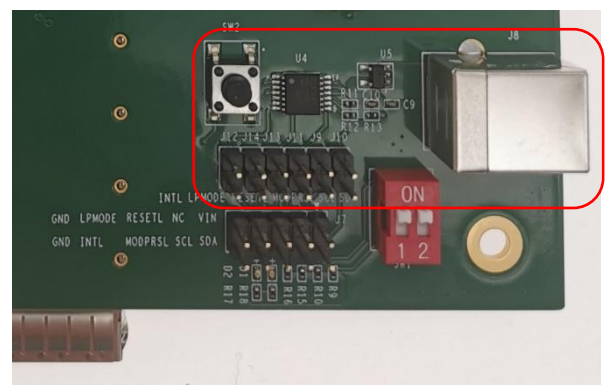


Figure1: QSFPDD-MCB-8-GC

USB communication switch

Pin	Function Definition
J9	SCL
J10	SDA
J11	MODPRSL
J12	INTL
J13	RESETL
J14	LPMODE

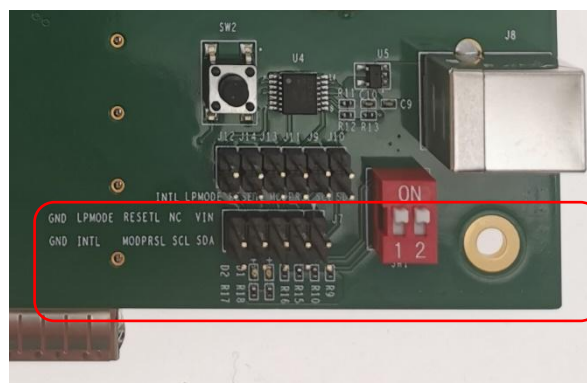


Notes: If you want use USB communication, use jumper caps short pin J9, J10 (SCL,SDA) . If you want using you own I2C drive, do not use jumper caps in these two pins.

QSFP-DD Module Compliance Board

IIC Pin Definition

GND	LPMODE	RESETL	NC	VIN
GND	INTL	MODPRSL	SCL	SDA



Order Information

P/N	Description
QSFDD-MCB-8-GC	QSFP-DD MCB with 1x8 Multi-coaxial Connectors

Accessories for QSFDD-MCB-8

RCHD-SD08-030S-4N	Multi-coaxial Cable Assembly,HS40(Female) to 2.92(male),1x8,length 30cm
RCHD-SD08-080S-4N	Multi-coaxial Cable Assembly,HS40(Female) to 2.92(male),1x8,length 80cm
RCHD-SD08-xxxS-4N	Multi-coaxial Cable Assembly,HS40(Female) to 2.92(male),1x8,length xxxcm