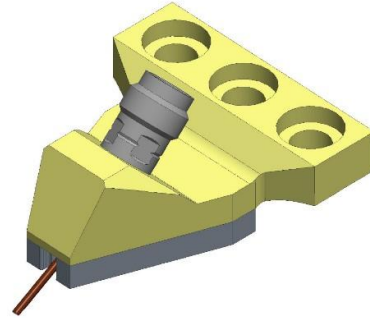
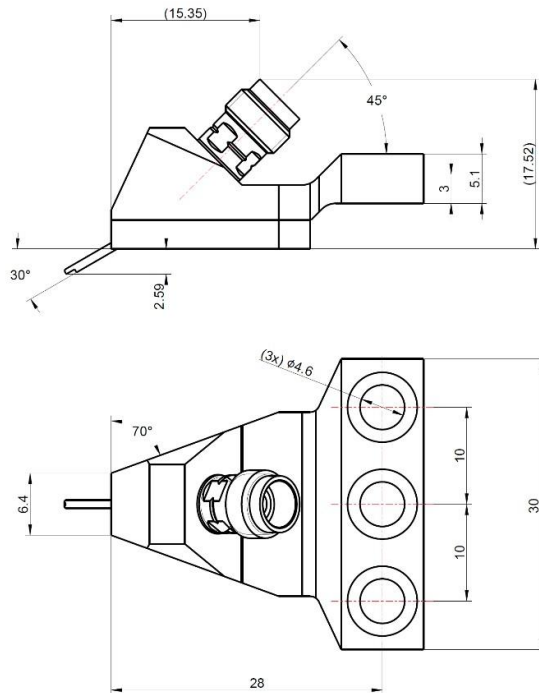


# High frequency probe GSG configuration



- all the dimensions are in mm. Tolerance: +/-0.25

## Configuration

Connector	2.4 female
Probe Material:	
-Probe tip	Nickel alloy, Gold plating
-Body	Aluminum Alloy
Probe tip width	30um
Overtravel	50un~75un

## Electrical Characteristics

Impedance	50 $\Omega$
Frequency Range	DC to 50 GHz
Return Loss	>14 dB @ DC to 50 GHz; based on pitch 100um
Insertion Loss	<0.8 dB @ DC to 50 GHz; based on pitch 100um

## Environment Data

Working Temperature	-45°C to +85°C
RoHS	Compliant

## Order Information

P/N	Description
<b>2.4-A-GSG-150</b>	45 Angle GSG Probe, 150 um pitch, DC to 50 GHz
<b>2.4-A-GSG-XXX</b>	45 Angle GSG Probe, XXX um pitch, DC to 50 GHz